



Data is more valuable
as a shared resource



Safe, Resilient Future Cities



77% of the surveyed IoT experts
claimed that **Interoperability** is
the biggest challenge currently
facing the Internet of Things

(IoT Nexus, 2015)



**Machina
Research**



© Machina Research
White Paper
May 2016

Open standards in IoT deployments would accelerate growth by 27% and reduce deployment costs by 30%

OGC[®]

Copyright © 2017 Open Geospatial Consortium

Handbook: Internet of Things Alliances and Consortia

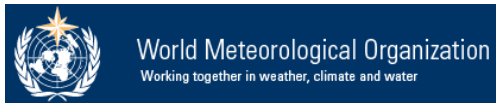
Location, semantics and a focus on coordination
(Arrows indicate OGC Alliance Partners)



CC Attribution: Postscapes.com – Version 1.0 Updated March 2015

OGC Alliance Partners

A Critical Resource for Advancing Standards



... and others

www.opengeospatial.org/ogc/alliancepartners

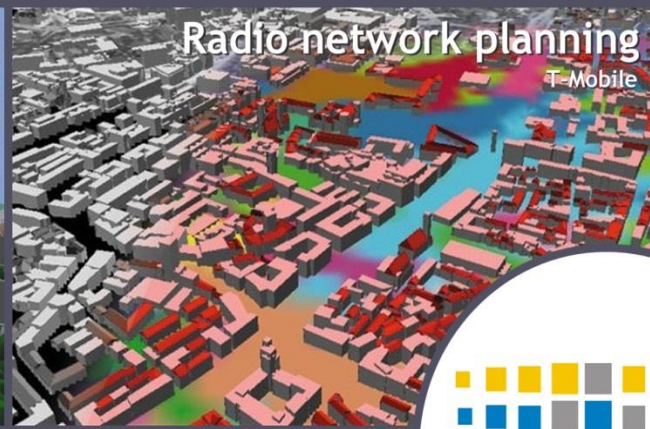
Disaster management

Kreis Recklinghausen



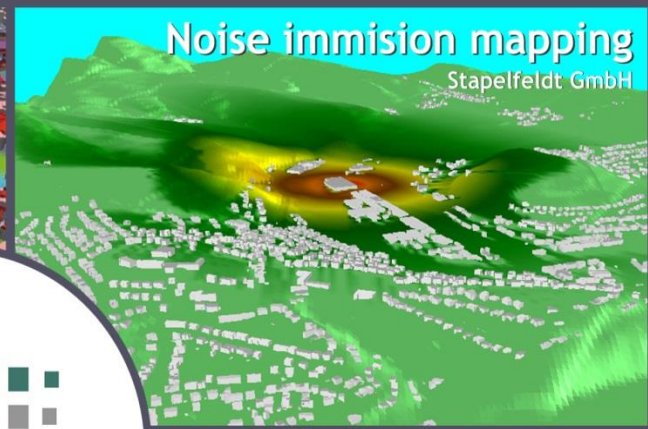
Radio network planning

T-Mobile



Noise immision mapping

Stapelfeldt GmbH



for 3d city models



Police simulator

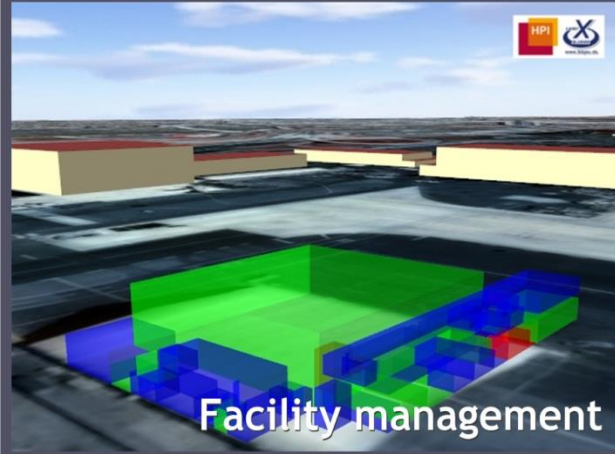
Rheinmetall Defence Electronics



Business development & tourism



Navigation



Facility management



Urban planning



Architecture

Architekturwerkstatt SenStadt Berlin

SWE today

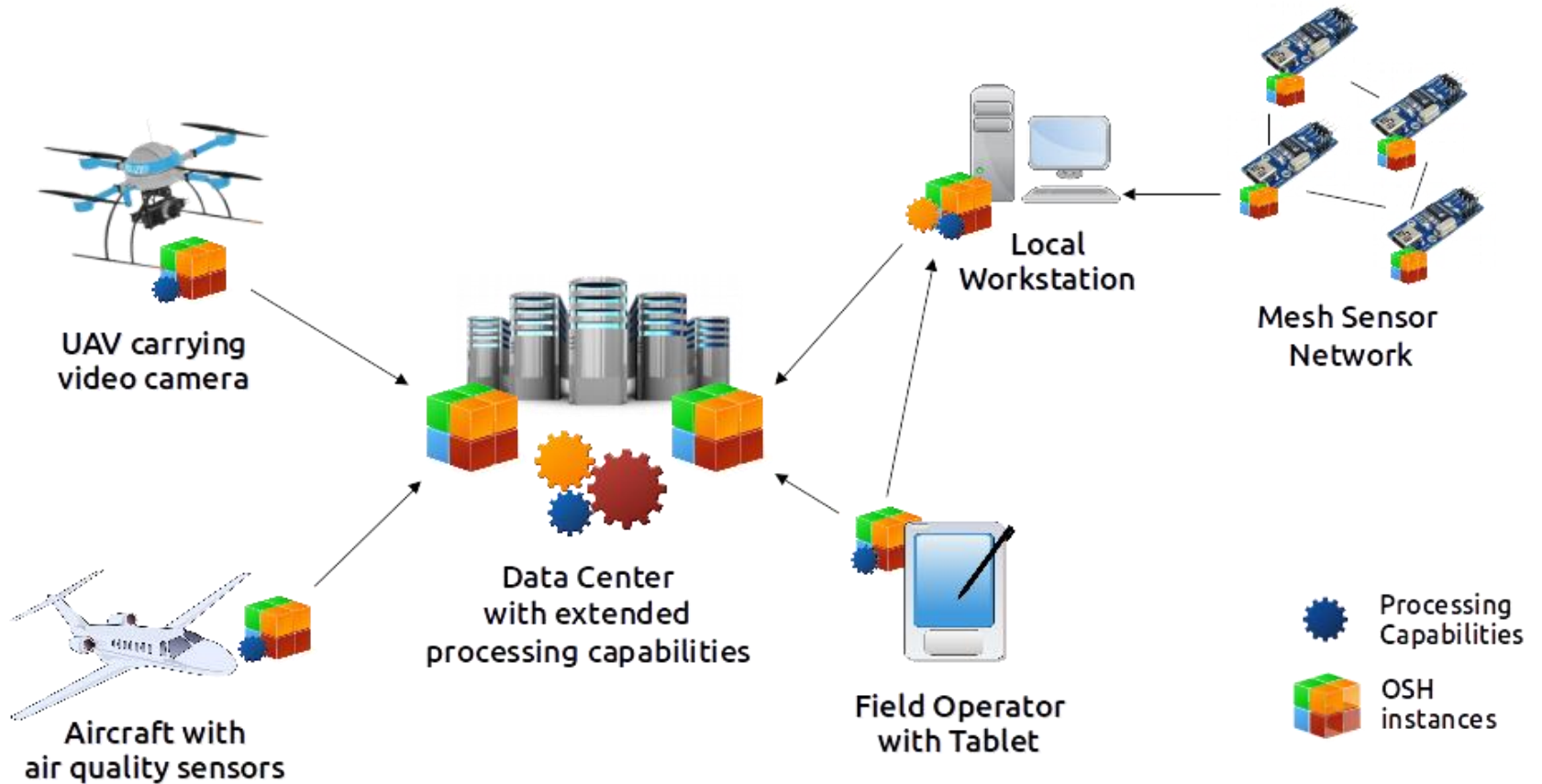
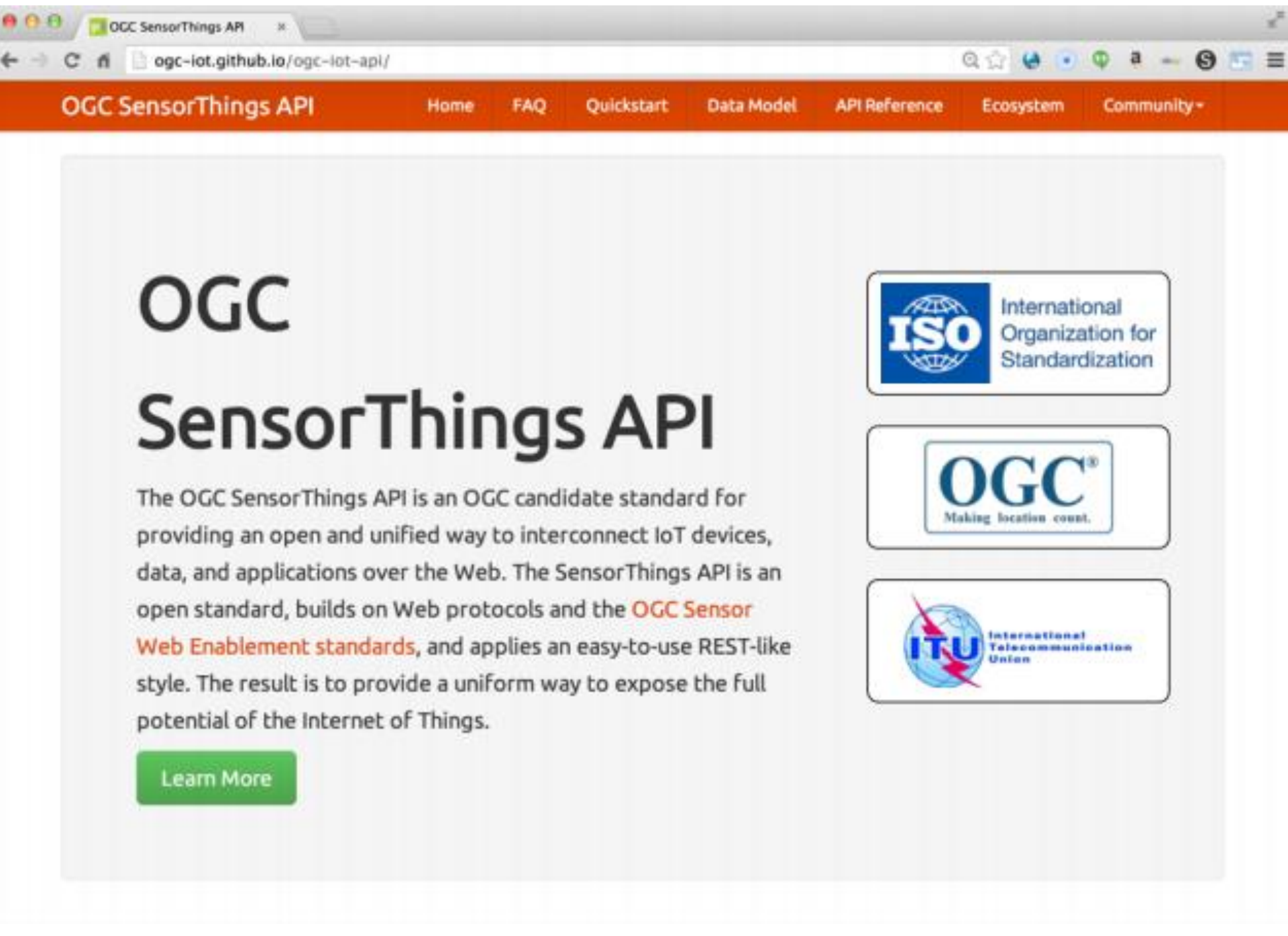


Image courtesy of opensensorhub.org



OGC

SensorThings API

The OGC SensorThings API is an OGC candidate standard for providing an open and unified way to interconnect IoT devices, data, and applications over the Web. The SensorThings API is an open standard, builds on Web protocols and the **OGC Sensor Web Enablement standards**, and applies an easy-to-use REST-like style. The result is to provide a uniform way to expose the full potential of the Internet of Things.

[Learn More](#)



An OGC Framework for Smart Cities



- “OGC Smart Cities Spatial Information Framework”

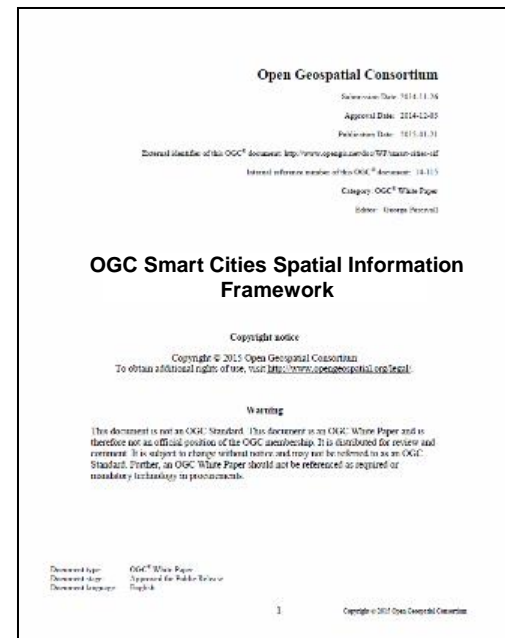
- https://portal.opengeospatial.org/files/?artifact_id=61188

- Influenced by:

- OGC’s geospatial, sensor, processing, mobile standards work
 - Survey of Smart City Standards Activities:
 - JTC 1, ITU, ISO, BSI, DIN, others
 - Survey of OGC CityGML implementations

- Goals:

- Pilot Smart Cities Spatial Framework in select cities (<http://www.opengeospatial.org/blog/1886>)
 - Advance an OGC Best Practice for Location Enabled Smart Cities



Urban Platform

ESPRESSO and European Innovation Partnership for Smart Cities and Communities

The Urban Platform as an enabler for *Smart* Smart City initiatives, based on open standards, avoiding vendor lock-in and increased competition

Connect, Collect, Comprehend, Create

ESPRESSO has on board:

4 Standard Developing Organisations: DIN, ETSI, OGC, bSI

2 Cities: Rotterdam and Tartu

Urban Platform to be used by developers, decision makers, procurement, ...

© ESPRESSO



Urban Platform

ESPRESSO and European Innovation Partnership for Smart Cities and Communities

- Capability Map
- Information Systems Architecture

Based on :

- Open standards, Market & vendor agnostic
- No prescription of solutions nor technologies
- Modular, Incrementally achievable
- Capability and layered based

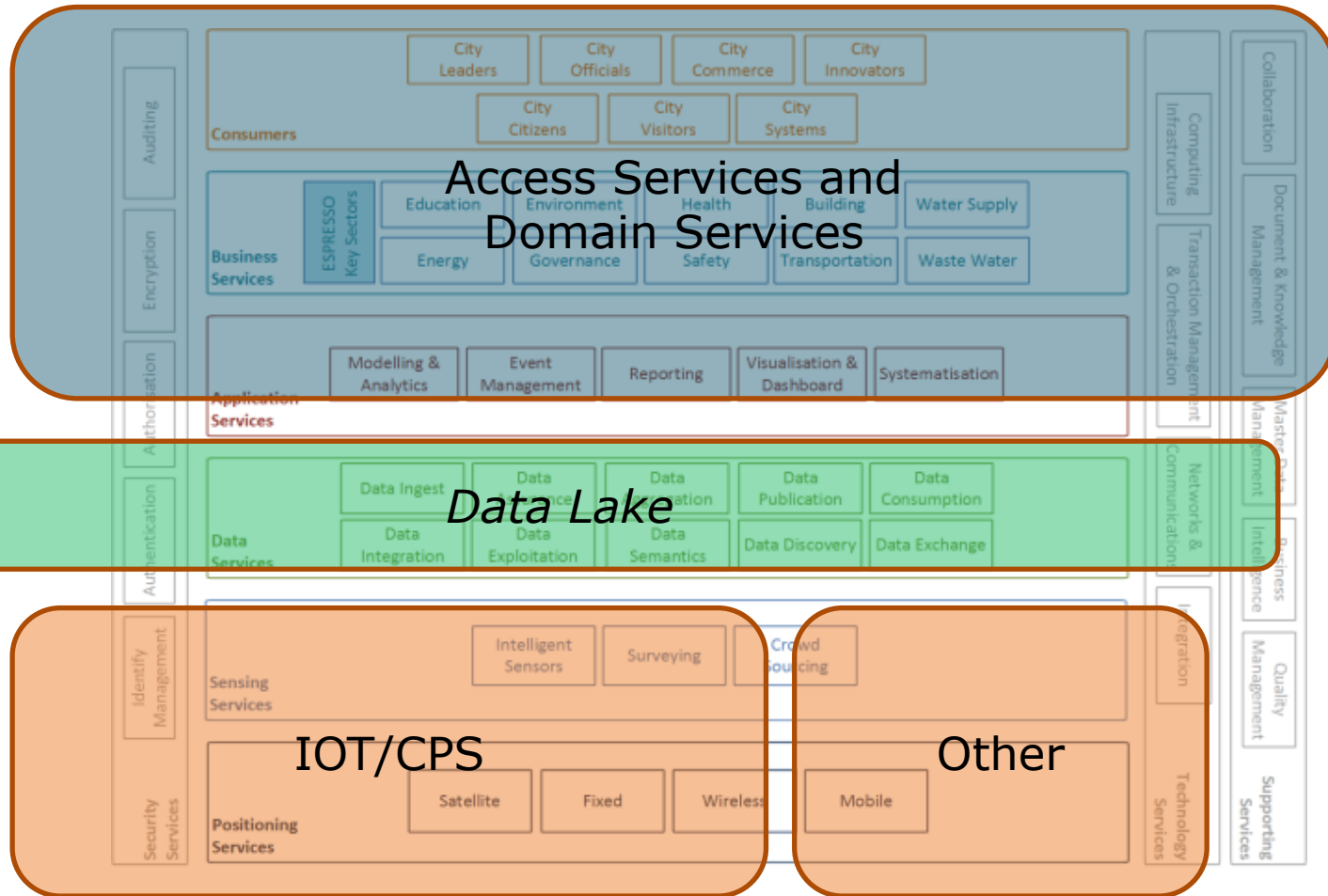
Existing city architectures

EIP SCC WS2 (See later today)

ITU-T WG20, ISO/IEC JTC1, ETSI, ...

© ESPRESSO

Information Architecture



Appl Zone

Data Zone

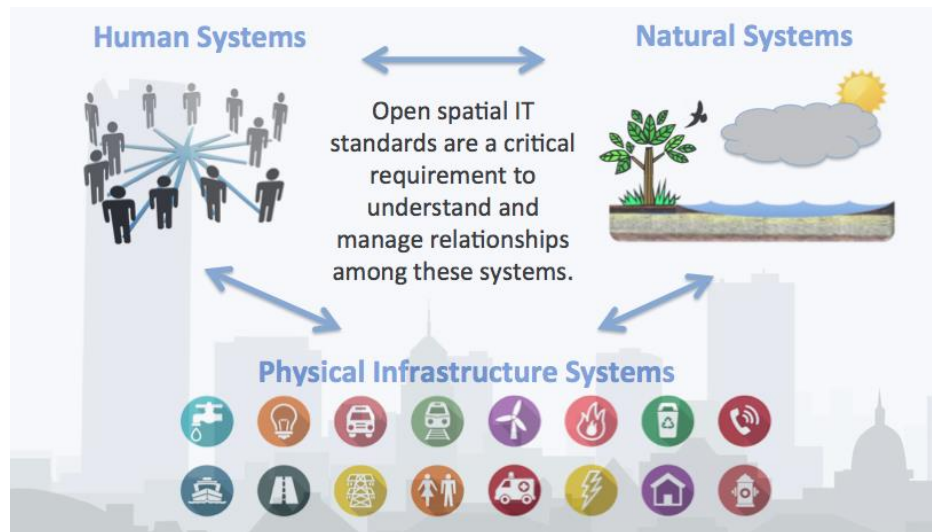
Device Zone

© ESPRESSO

FutureCities Pilot



- Coordinated effort between OGC and buildingSMART International
- Seeking sponsors, most of work is intended to occur in Europe
- Pilot will demonstrate and enhance the ability of cities to use diverse, interoperating spatial technologies to deliver improved quality of life, civic initiatives, and resilience



<http://www.opengeospatial.org/pressroom/pressreleases/2290>

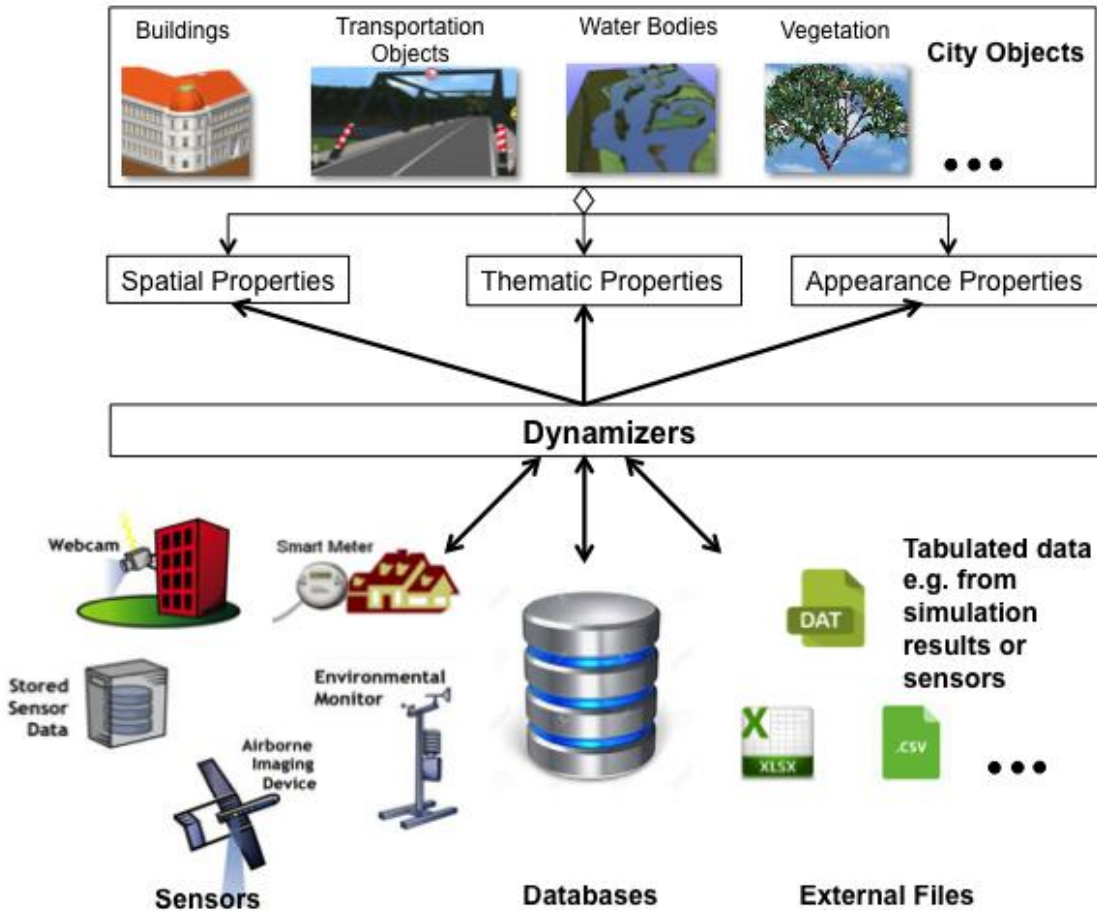


Future Cities Pilot – Phase 1



- Youtube link to the video shown
- <https://www.youtube.com/watch?v=aSQFIPwf2oM>

Adding Dynamic Processes to Urban Models



Dynamizers

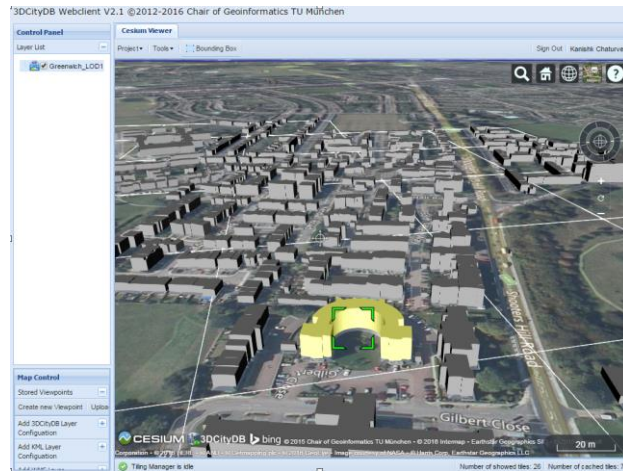
- Enhance properties of city objects by overriding static values
- Time-variant values from sensors, simulations, and external files

Future City Pilot 1 Scenario: Health

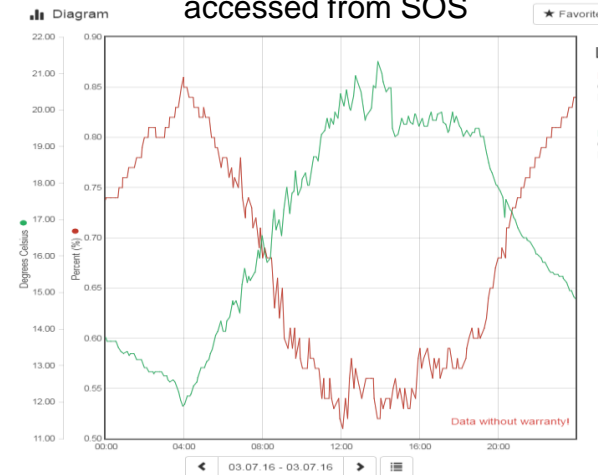


- Building Humidity and Heat during weather extremes
 - Dynamize: Override static CityGML properties with dynamic observations from SOS
 - Identify residents of senior living facility at risk

Visualization of and interaction with 3D building geometries

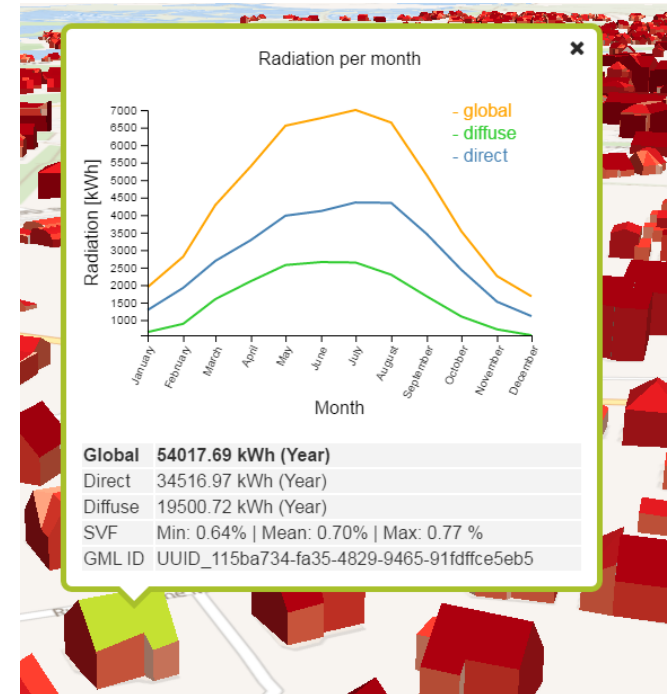
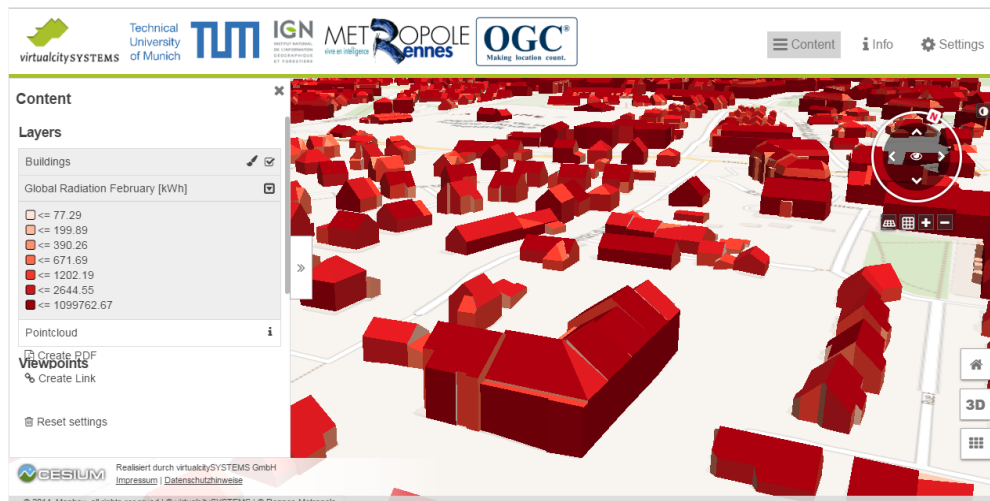


Real-time temperature, humidity accessed from SOS



Future City Pilot 1 Scenario: Energy

- Provide better services to the citizens and the energy planners by making sophisticated solar potential analysis.
- Visualization of solar energy production for roofs and facades of building



Plans for FCP Phase 2



- Call for Sponsors & Requirements 2017
- Also in the Geospatial, Civil Engineering & BIM
- Requirements are coming in
- Worldwide scope
- Include Indoor & Facility Management
 - VR, AR?
- Interested to sponsor or participate?
 - Let me know!



Location Powers: Underground

Tuesday 5th September 2017 0900 – 1700

<http://www.locationpowers.net/>

Geovation Hub, London, UK

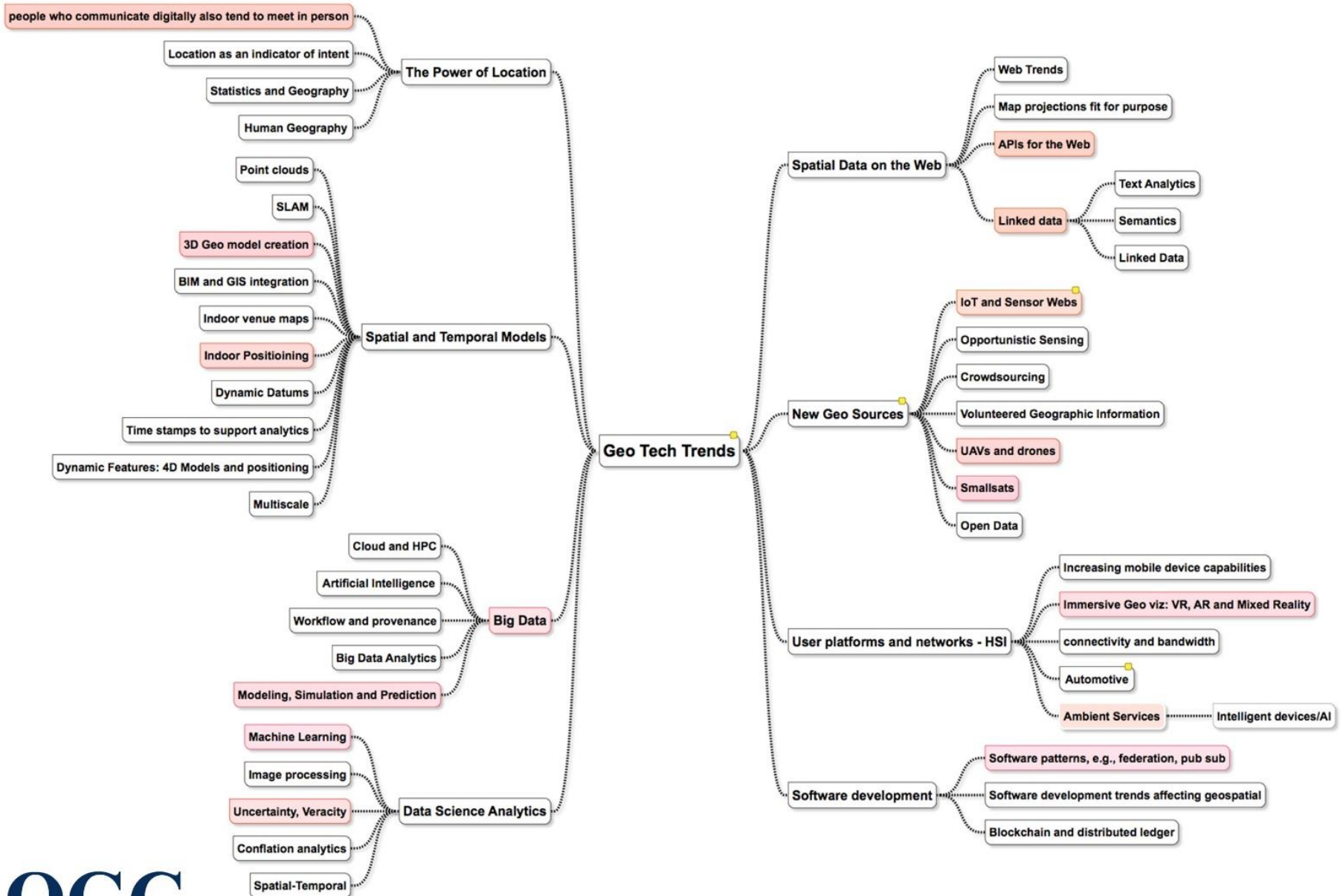


OGC Mobile Location Services Working Group



- Mission of MLS WG: to broaden the use of location-aware technologies in mainstream consumer and business IT infrastructures.
 - Identify MLS technology requirements and solutions
 - Encourage OGC WGs to progress key services and encodings
 - Make recommendations for adoption of mass-market, mobile location services standards.
- Focal point for complementary organizations, such as
 - W3C, OSGeo, Web3D Consortium, Eclipse Foundation
 - Open Mobile Alliance (OMA), Small Cell Forum, GSMA, CTIA
 - Location Based Marketing Association (LBMA)
 - In Location Alliance (ILA)

OGC Tech Trends – March 2017



How to get involved?



- Ask for your solutions to be “open” standards compliant
- Become a member
- Join an OGC Forum
- Follow a Domain Working Group
- Visit us at the Technical Meetings in September in Southampton, UK
- Don't be passive, be part of standards innovation!

***Standards
should be
driven by
innovation
and achieved
through
collaboration***





Denise McKenzie
OGC Outreach

+44 7581118189

dmckenzie@opengeospatial

@spatialred

@opengeospatial

www.opengeospatial.org

OGC[®]